



Year Ended March 31, 2025



	Millions of yen		Thousands of U.S. dollars
	2025	2024	2025
For the Fiscal Year:			
Total Income	¥ 50,765	¥ 50,735	\$ 339,522
Total Expenses	47,202	46,892	315,696
Income Before Income Taxes	3,562	3,842	23,825
Net Income	2,681	2,729	17,931
Business Profit	3,454	1,879	23,103
At Year-End:			
Deposits	¥ 3,274,207	¥ 3,272,374	\$ 21,898,122
Loans and Bills Discounted	1,196,725	1,154,871	8,003,782
Securities	1,128,401	1,129,949	7,546,823
Total Assets	3,568,998	3,569,762	23,869,704
Total Net Assets	111,228	118,258	743,902

Notes: 1. Yen figures are rounded down to the nearest one million yen in this annual report.
2. Figures stated in U.S. dollars are translated solely for convenience at ¥149.52 to U.S.\$1, the rate prevailing on March 31, 2025.
3. "Business Profit" is obtained by adding the interest income, fees and commissions (income) and other operating income, subtracting interest expenses (excluding expenses on money held in trust), fees and commissions (expenses), other operating expenses, transfers to general reserves for bad debts and general and administrative expenses. Business profit is one of the indicators used by shinkin and other banks.

Profile

The Tama Shinkin Bank was founded in 1933 as the Tachikawa Credit Cooperative (a limited liability entity). With the Shinkin Bank Law coming into effect in 1951, it changed its name to Tama Chuo Shinkin Bank. On January 10, 2006, Tama Chuo Shinkin Bank merged with local counterparts Taihei Shinkin Bank and the Hachioji Shinkin Bank to become "Tama Shinkin Bank", a response to an era of great change and to better serve community needs and fulfil its mission as a local financial institution.

For the future growth and prosperity of our local customers and our region, Tama Shinkin Bank provides comprehensive and proactive support to business customers operating in Tama, individuals living and working in Tama, and the entire Tama community from every angle, not only with financial services but also economically, culturally, and in daily life.

Popularly known as "Tamashin" by the local community in which it has established its roots, Tama Shinkin Bank contributes to local community development and has grown into the leading local bank. It is also one of Japan's highest ranking shinkin banks.

Management Philosophy

*Tamashin is a business dedicated to the happiness of our customers
Tamashin's mission is to contribute to the happiness and well-being of our customers*

Long-term vision

Continue to be a region's problem-solving infrastructure into the future.

Basic Policies

Tamashin, as a public entity in society, and motivated by the spirit of cooperation among regional financial institutions:

1. Is based on a system of cooperation among officers and employees.
2. Builds workplaces characterized by good faith, trust, enthusiasm, and reliability.
3. Expands operations and improves quality in the course of financial activities.
Through these efforts, Tamashin seeks to contribute to the prosperity of its home regions and the vitality of the Japanese economy.

Corporate Ethics at Tama Shinkin Bank

1. Developing self-awareness and confidence as a socially responsible entity
Tamashin is building trust with its members, customers, and local communities through its basic policies, self-awareness of its public role, and sound management based on the self responsibility of management.
2. Putting customers first and contributing to local communities
Adhering to its management philosophy, Tamashin strives through its business activities to offer high-quality, premium services to its customers, and to contribute to the growth of local communities.
3. Adhering strictly to laws and regulations
Tamashin complies with both laws and regulations, does not violate social norms, and remains conscientious and fair in its corporate operations.
4. Eliminating anti-social forces
Tamashin takes a resolute stance against anti-social forces that put the order and safety of society at risk.
5. Disclosure of management information and cordial relations with local communities
Tamashin works for cordial relations with local communities through the vigorous and fair disclosure of management information, and the deepening of communication on a broad scale.

Sustainability Policy

Based on our management philosophy of "contributing to the happiness and well-being of our customers," every executive and employee at Tamashin will value sustainability and contribute to realizing a sustainable regional society through initiatives to maintain the rich environment of the Tama region, develop culture and arts, and create cities that are comfortable to live in.

Fostering connections for the future, creating permanent value



Thank you for your support of Tamashin. We are delighted to share our Annual Report 2025 with you to report on our activities in fiscal year 2024. Please take some time to read about Tamashin's initiatives and results over the past year and share your honest opinions with us.

We are always eager to listen to your views and incorporate these feedback into our business operations.

New Values Made by "Connections"

In fiscal year 2024, we implemented a variety of initiatives to strengthen our "connections," the main theme of our Mid-Term Management Plan.

For our business customers, we made the most of our banking network and actively worked to provide business-matching support, such as sales channel development, in order to support the various needs of our customers.

For our individual customers, we actively used both our existing in-person channels and virtual channels so that we could provide solutions tailored to the issues that each customer faces.

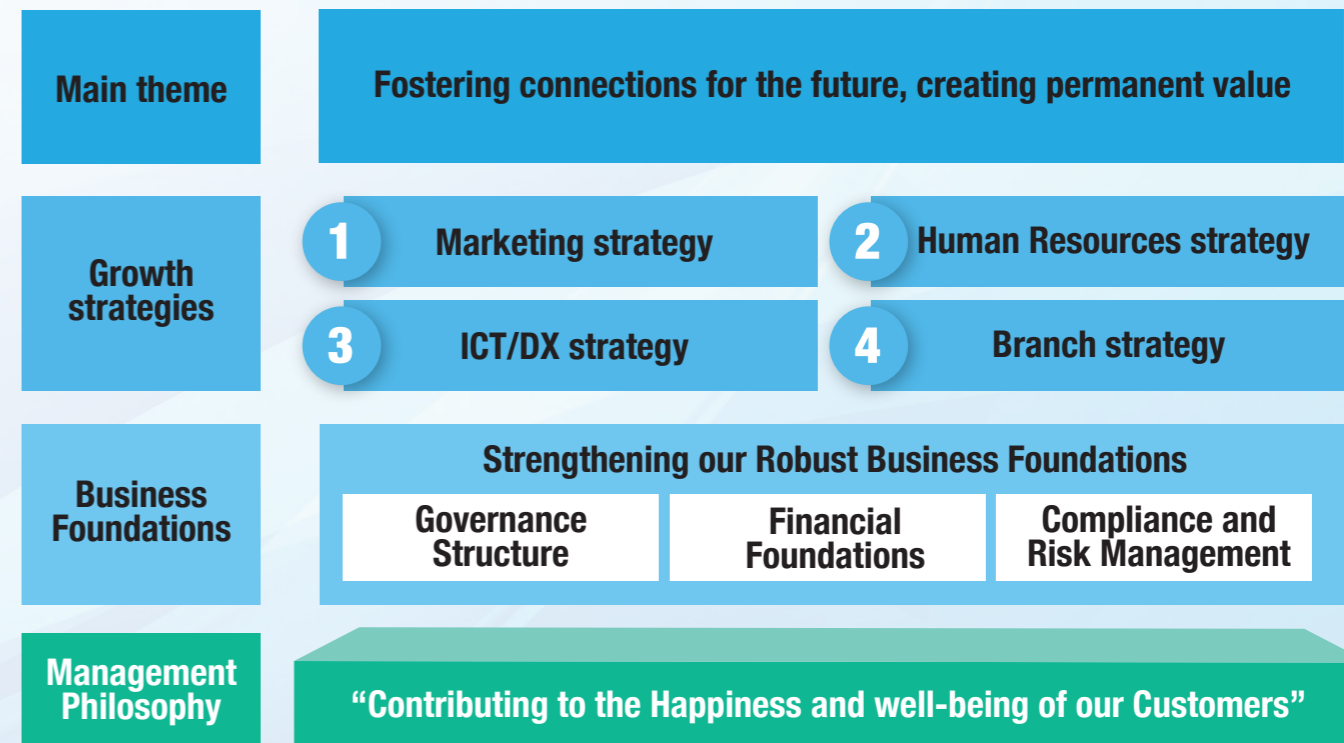
Fiscal year 2025 will be the halfway point in our three-year Mid-Term Management Plan 2026. We will continue "contributing to the happiness and well-being of our customers" by valuing our various "connections" and creating new value.

We hope to continue receiving the steadfast patronage of our local customers.

M. Kanai
Masahiko Kanai, President

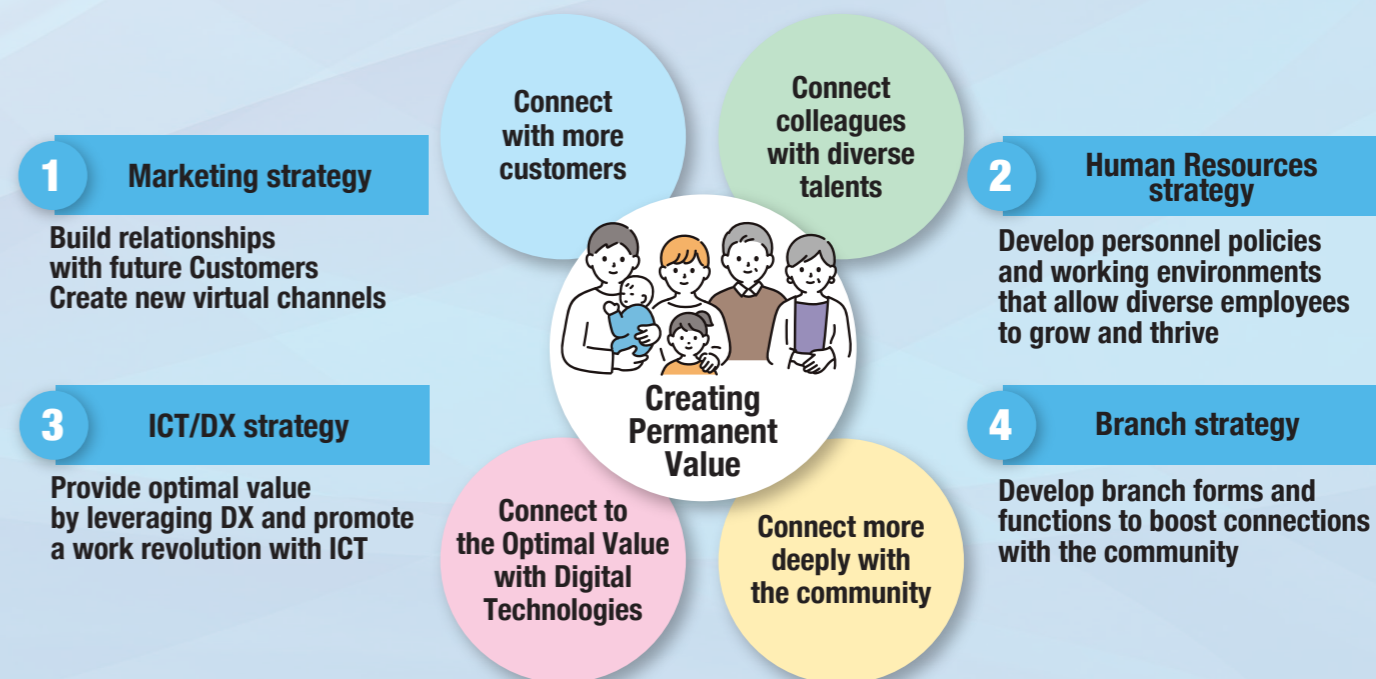
Mid-Term Management Plan 2026

Main Themes and Plan Overview



The keyword of the growth strategies is "connections"

The keyword of each strategy in the Mid-Term Management Plan is "connections". Connections with customers, real-life and digital connections, connections among colleagues, connections of various data, connections with the community through branches.



Overview of Business Results

Fiscal year 2024 was the First year of the Mid-Term Management Plan 2026. It was based on the key theme of “Fostering connections for the future, creating permanent value in Tama” and the four basic strategies.

1. Marketing strategy
2. Human Resources strategy
3. ICT/DX strategy
4. Branch strategy

Balance of Deposits and Loans

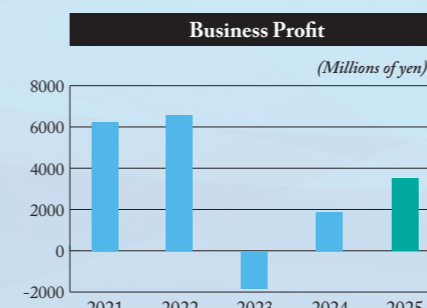
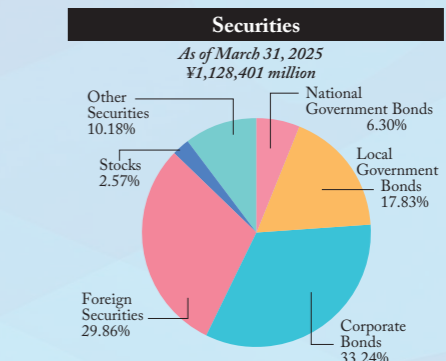
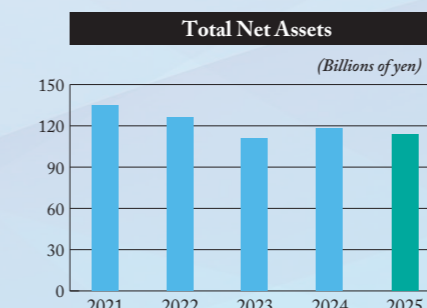
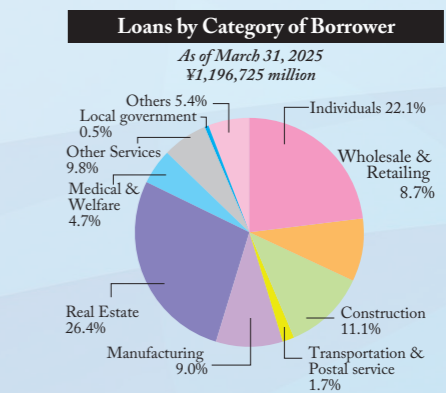
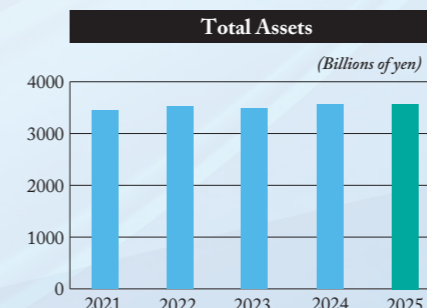
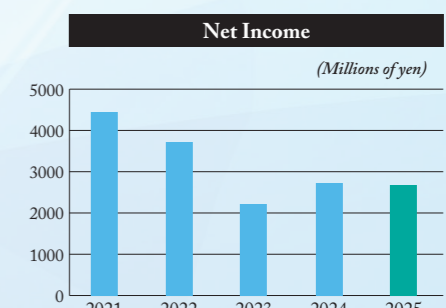
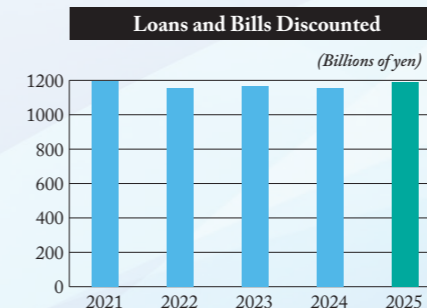
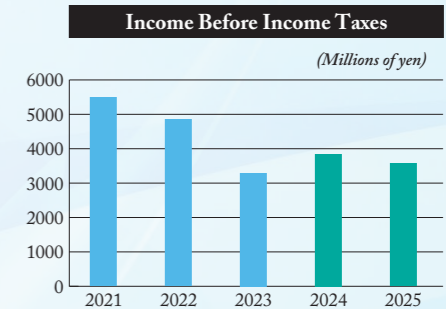
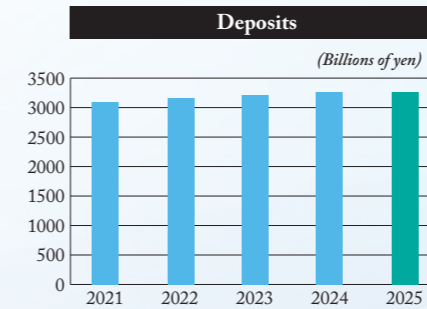
Thanks to the support of our customers in the community, deposits increased from the previous fiscal year by ¥1.8 billion (0.0% increase) to ¥3,274.2 billion. Loans increased by ¥41.8 billion (3.6% increase) from the previous fiscal year to a total of ¥1,196.7billion.

Earnings

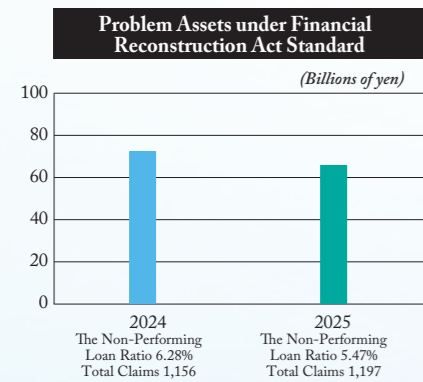
Due to an increase in deposit interest rates, deposit interest increased by ¥2.0 billion compared to the previous fiscal year. However, interest on loans increased by ¥0.4 billion, interest on due from banks increased by ¥1.6 billion yen, and gains on redemption of government bonds and other securities increased by ¥0.7billion. As a result, net operating profits increased by ¥1.5 billion(83.7% increase) to 3.4 billion yen.

Core net operating profit, which demonstrates the profitability of core operations at financial institutions, increased by ¥0.9 billion (26.9% increase) year-on-year to ¥4.3 billion.

Ordinary profit decreased by ¥0.1 billion (2.8% decrease) to ¥3.5 billion compared to the previous fiscal year, income before income taxes decreased by ¥0.2 billion (7.2% decrease) to ¥3.5 billion and net income decreased by ¥0.04 billion (1.7% decrease) to ¥2.6 billion.



* 1: The balance by securities type is the amount on the balance sheet as of the end of March 2025.
 * 2: Other Securities are investment trusts and other vehicles



Non-Performing Assets

Change in Non-performing loans (disclosed loans under the Financial Reconstruction Act)

Tamashin's non-performing loans decreased by ¥7.0 billion to ¥65.6 billion from the previous fiscal year. The non-performing loans ratio decreased by 0.81 points to 5.47% from the previous fiscal year.

* The loans disclosed under the Financial Reconstruction Act cover not only loans but also foreign exchange, guarantees of obligation-per contra, suspense payments, accrued interest, and private placement bonds guaranteed by Tamashin.

Percentage by loan type disclosed under the Financial Reconstruction Act and status of preservative attachment

Tamashin's disclosed loans excluding normal claims amounted to ¥65.6 billion, of which 87.27% were secured by collateral, guarantees and/or loan loss reserves. The unsecured amount of ¥7.9 billion was covered in full by equity capital.

* There are no substandard loans

Risk-Monitored Loans under the Shinkin Bank Law and Non-Performing Assets under the Financial Reconstruction Act
Years ended March 31, 2025 and 2024

	Millions of yen	
	2025	2024
Bankrupt and Quasi-Bankrupt Assets	¥ 7,937	¥ 8,373
Doubtful Assets	57,688	64,298
Substandard Loans	—	—
Total Loans past due for three months or more	—	—
Total Restructured Loans	—	—
Normal Assets	1,132,206	1,083,893
Total	¥ 1,197,832	¥ 1,156,566

Glossary of Terms

Bankrupt and Quasi-Bankrupt Assets
Loans to bankrupt borrowers, to those whose businesses are idle due to reorganization or negotiations in progress, and to those who are in a position similar to the aforesaid borrowers.

Doubtful Assets
Loans to borrowers whose businesses are still operating, but whose financial position or business performance are deteriorating, and who are for that reason highly likely to find themselves unable to make required payments on principal and interest.

Substandard Loans
Loans to customers identified as requiring caution under our self-assessment system. This figure represents those loans past due for three months or more, or restructured loans.

Normal Assets
Loans to borrowers who display no particular problems with their financial position or performance, and who fall into none of the three categories above.

Capital Adequacy Ratio

The amount of total capital, the numerator of the capital adequacy ratio, increased by ¥2.0 billion to ¥119.1 billion due to retained earnings, while the value of risk assets, the denominator, increased by ¥3.9 billion to ¥1,377.1 billion. As a result, the capital adequacy ratio increased by 0.12 points to 8.65%, considerably above the Japanese standard of 4%.

With respect to the capital adequacy ratio, Tamashin does not simply pursue the highest possible ratio. We consider our role in the community first and foremost, aiming to enhance the health of our balance sheet by steadily accumulating reasonable profits earned from assisting our customers as retained earnings.

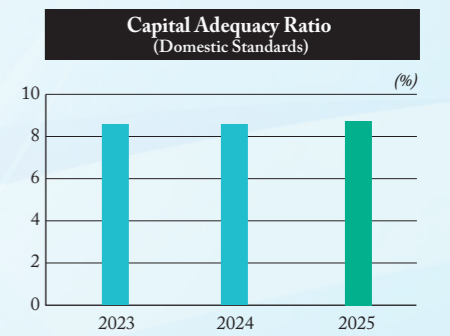
Capital Adequacy Ratio (Calculated under Basel III)

Year ended March 31, 2025 and 2024

	Millions of yen	
	2025	2024
Core capital basic items	¥ 120,224	¥ 118,157
Core capital adjustment items	(956)	(990)
Total Capital	¥ 119,173	¥ 117,166
Risk Assets		
Total amount of credit risk assets	¥ 1,301,090	¥ 1,312,072
Amount Obtained by Dividing Operational Risk Equivalent by 8%	76,014	61,109
Capital Adequacy Ratio	8.65%	8.53%

Note: The "standards for determining the adequacy of capital of shinkin banks and the Federation of Shinkin Banks in light of their holdings of assets, etc. under the provisions of Article 14-2 of the Banking Act applied mutatis mutandis in Article 89, paragraph 1 of the Shinkin Bank Law (Financial Services Agency Notification No. 21 of 2006)" provide for the method to calculate capital adequacy ratio.

Tamashin's capital mainly consists of "equity capital" provided by shareholders and "retained earnings" retained internally from past profits, and is computed by deducting an amount of adjustment items related to core capital from an amount of basic items related to core capital. Of Tamashin's capital, the balance of basic items related to core capital stood at ¥120.2 billion and the balance of adjustment items related to core capital stood at ¥1.0 billion at the end of the fiscal year ended March 2025.

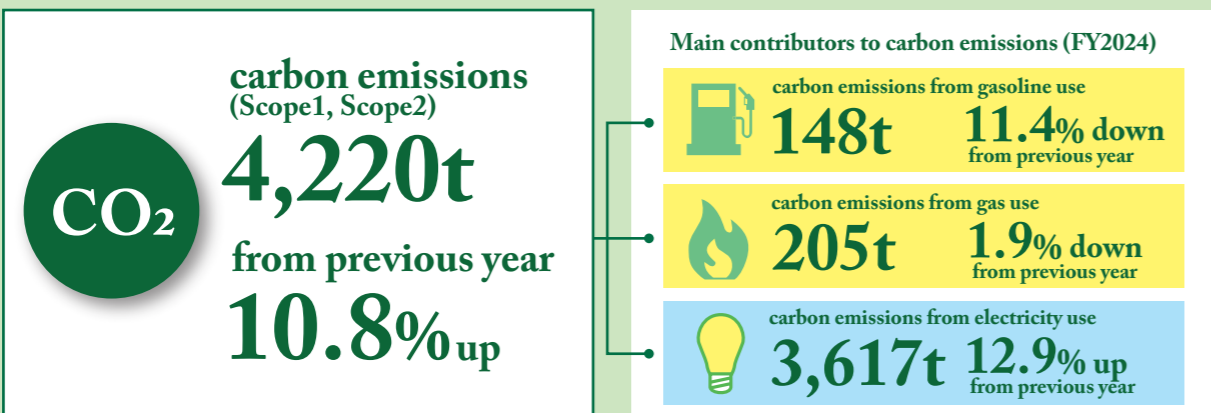


Method to calculate the capital adequacy ratio under Basel III

$$\frac{\text{Amount of basic items of core capital} - \text{Amount of adjustment items of core capital}}{\text{Amount of credit risk assets} + \frac{\text{Amount obtained by dividing the total market risk equivalent amount by 8\%}}{\text{Amount obtained by dividing the total operational risk equivalent amount by 8\%}}} \geq 4\%$$

Reduction of Carbon Emissions

Year ended March 31, 2025



※Scope 1 emissions: Calculated on the basis of gas (reticulated gas and LPG) use and gasoline use
 ※Scope 2 emissions: Calculated on the basis of electricity use and chilled and heated water use for the purpose of local heating and cooling
 ※Calculated on the basis of data available to Tamashin

Topics

Formulation of sustainability policy

We have established a sustainability policy to ensure that the Tama region develops into a sustainable and prosperous community, and we will promote activities that are more conscious of sustainability.



Initiatives to improve the energy efficiency of vehicles

We are actively adopting the use of environmentally-friendly electric vehicles (EVs) and electric motorcycles. In FY2024, we introduced 5 new EVs and 35 new electric motorcycles. Through Tamashin's activities, we will continue with efforts to contribute to the conservation of the Earth's environment.



Compliance-Related Efforts

1. Compliance Management Structure

Tamashin is striving to strengthen our compliance (observance of laws and regulations, etc.) structure with the belief that it is our primary responsibility to observe laws and regulations, as well as the various rules and norms accepted by society that are based on such laws and regulations, in order to become truly trusted by customers in the region as a financial institution that advances with the region.

In our compliance management structure, Tamashin positions the Compliance and Risk Management Department as the office responsible for oversight of compliance, providing it with the authority necessary to ensure the observance of laws and regulations, etc. and ensuring its independence from sales divisions, etc. to supervise other divisions, thereby strengthening the compliance structure for the entire Bank. Tamashin also assigns officials to be in charge of compliance at all departments of our headquarters and all branches to ensure thorough adherence to compliance.

2. Dissemination of Compliance Manual

Tamashin has established a code of corporate ethics and a code of conduct, and distributed the Compliance Manual, which incorporates comments and explanations about these codes as well as laws, regulations and other rules, to all employees, and is making continuous efforts to ensure that employees thoroughly understand the content of the Compliance Manual.

3. Hold a Compliance Program

Tamashin formulates the “Compliance Program” each fiscal year, and provides a variety of training courses so that all the members of the bank fully understand compliance and implement a variety of measures for developing an environment fit for compliance in accordance with the Compliance Program.

Declaration on Compliance

Tamashin's managers and employees recognize their social mission as a cooperative financial institution and conduct actions with compliance as a top priority management issue to fulfill the trust received from customers and local society.

The Bank has formulated a “Compliance Program” that places compliance at the root of its corporate culture and declares its intent to implement compliance with the participation of all managers and employees.

Measures for Anti-Money Laundering and Countering the Financing of Terrorism

The international community, including Japan, cooperates to eliminate threats such as crime and terrorist activities, which have been increasing in recent years. Tamashin is working with the relevant ministries and agencies to establish controls for anti-money laundering and countering the financing of terrorism (AML/CFT) to maintain a safe and secure financing system, in order to prevent crime and terrorist activities by cutting off the flow of funds to criminals and terrorists.

Tamashin considers measures against AML/CFT and criminal funding as an important element of business. We have established the AML/CFT Countermeasure Supervision Department and designated responsible officers, and appropriately evaluate the risks that Tamashin faces and implement suitable countermeasures.

Financial Statements

Year Ended March 31, 2025

Human Capital

Employees' alignment with management philosophy and vision (FY2024 survey)



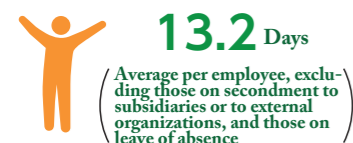
Average length of service for all employees (as of March 31, 2025)



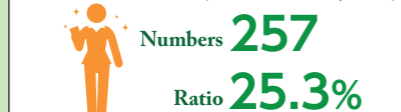
Number of employees taking childcare leave and leave for childcare purposes, and utilization rate of such leave (FY2024)



Average number of paid leave days taken in 2024



Number and ratio of female managers (at the supervisor level or above) (as of March 31, 2025)



Employment rate of persons with disabilities (as of March 31, 2025)



	Millions of yen		Thousands of U.S. dollars
	2025	2024	2025
ASSETS			
Cash	¥ 32,562	¥ 29,339	\$ 217,777
Due from Banks	1,069,421	1,102,514	7,152,365
Monetary Claims Purchased	64,330	72,457	430,246
Money Held in Trust	13,443	12,391	89,909
Trading Account Securities	47	49	314
Trading Account National Government Bonds	47	49	314
Securities	1,128,401	1,129,949	7,546,823
National Government Bonds	71,133	55,041	475,745
Local Government Bonds	201,275	208,990	1,346,147
Corporate Bonds	375,091	311,770	2,508,634
Stocks	29,001	29,874	193,962
Other Securities	451,899	524,273	3,022,332
Loans and Bills Discounted	1,196,725	1,154,871	8,003,782
Bills Discounted	3,098	6,071	20,719
Loans on Bills	22,168	24,232	148,266
Loans on Deeds	1,133,442	1,103,652	7,580,539
Overdrafts	38,016	20,915	254,256
Foreign Exchange	2,447	2,142	16,371
Due from Foreign Banks	2,447	2,142	16,371
Other Assets	24,187	31,692	161,767
Outstanding Bank Transfer Advanced	1,119	1,777	7,490
Investment in the Shinkin Central Bank	14,635	14,635	97,885
Prepaid Expenses	125	132	840
Accrued Income	5,098	6,003	34,096
Gross Unrealized Gains from Derivative Transactions	912	1,403	6,100
Cash Collateral Advanced for Derivative Transactions	893	5,759	5,972
Others	1,402	1,981	9,382
Tangible Fixed Assets	33,711	34,590	225,467
Building	9,671	10,352	64,680
Land	20,356	20,356	136,147
Construction in Progress	35	—	237
Other Tangible Fixed Assets	3,648	3,881	24,402
Intangible Fixed Assets	1,327	1,373	8,877
Software	681	723	4,558
Software in Progress	1	—	7
Others	644	649	4,311
Prepaid pension costs	158	—	1,061
Deferred tax Assets	7,591	4,165	50,775
Reverse against Debt Guarantee	474	522	3,175
Reserve for Possible Loan Losses	(5,833)	(6,299)	(39,011)
(Specific Reserve for Possible Loan Losses)	(5,143)	(5,576)	(34,398)
Total Assets	¥3,568,998	¥ 3,569,762	\$ 23,869,704

Notes: 1. Yen figures are rounded down to the nearest one million yen in this annual report.

2. Figures stated in U.S. dollars are translated solely for convenience at ¥149.52 to U.S.\$1, the rate prevailing on March 31, 2025

3. Based on the provisions of Article 15, paragraph 1, item 1 in the law regarding cooperative financial institution's preferred securities (No. 44; enacted on May 12, 1993), we cancelled the entire amount of preferred capital that had already been issued on December 22, 2011. After receiving this cancellation of preferred share, we transferred ¥5,350 million (US\$35,781 thousand) of preferred share in this current fiscal year and are recording the amount as other share.

	Millions of yen		Thousands of U.S. dollars
	2025	2024	2025
LIABILITIES			
Deposits	¥ 3,274,207	¥ 3,272,374	\$ 21,898,122
Current Deposits	74,247	72,685	496,574
Ordinary Deposits	2,241,335	2,178,419	14,990,202
Savings Deposits	9,135	9,403	61,099
Deposits at Notice	2,743	3,365	18,347
Time Deposits	874,611	941,568	5,849,462
Installment Savings	37,192	41,640	248,744
Other Deposits	34,941	25,290	233,690
Call Money	103,816	102,633	694,334
Cash Collateral Received for Repurchase Agreement	63,390	57,884	423,958
Foreign Exchange	31	92	213
Foreign Bills of Exchange Sold	21	25	143
Foreign Bills Payable	10	66	70
Other Liabilities	9,939	12,534	66,474
Outstanding Bank Transfer Received	1,466	2,554	9,805
Accrued Expenses	2,222	1,624	14,861
Reserve for Future Interest Payment of Installment Savings	14	9	94
Income Taxes Payable	288	376	1,930
Consumption Taxes Payable	88	47	588
Unearned Income	246	260	1,645
Unsettled Equity Refunds	71	66	481
Unrefunded Equity Interest	2	—	14
Deposits from Employees	1,094	1,163	7,318
Gross Unrealized Losses from Derivative Transactions	1,151	2,921	7,700
Collateral Received from Financial Instruments	496	845	3,317
Asset Retirement Obligations	685	674	4,582
Other Liabilities	2,113	1,990	14,133
Reserve for Employee Bonuses	1,509	1,034	10,095
Reserve for Employee Retirement Benefits	19	209	133
Reserve for Director's Retirement Benefits	454	388	3,040
Reserve for Reimbursement of Deposits	149	133	998
Reserve for Contingencies	699	694	4,678
Deferred Tax Liabilities for Land Revaluation	3,076	3,000	20,576
Debt Guarantee	474	522	3,175
Total Liabilities	¥3,457,769	¥ 3,451,504	\$ 23,125,802
NET ASSETS			
Paid-in Members' Capital	26,015	26,162	173,991
Common Share	20,665	20,812	138,210
Other Share	5,350	5,350	35,781
Capital Retained Earnings	766	766	5,125
Legal Capital Reserve	766	766	5,125
Retained Earnings	93,185	91,127	623,231
Legal Reserve	24,330	24,050	162,722
Voluntary Reserve	68,855	67,076	460,509
Reserve for Specific Purpose	64,500	63,000	431,380
Unappropriated Retained Earnings for the Current Term	4,355	4,076	29,128
Treasure Share	—	(0)	—
Total Members' Equity	119,967	118,056	802,348
Unrealized Gains on Available-for-sale Securities	(11,330)	(3,751)	(75,780)
Deferred Gains or Losses on Hedges	(238)	1,046	(1,596)
Land Revaluation Excess	2,830	2,906	18,931
Total of Valuation and Translation Adjustments.	(8,738)	201	(58,446)
Total Net Assets	111,228	118,258	743,902
Total Liabilities and Net Assets	¥ 3,568,998	¥ 3,569,762	\$ 23,869,704

1. All yen figures have been rounded down to millions of yen by dropping the final six digits.
2. Trading account securities are recorded at fair value (the costs of such securities sold are computed using the moving-average method).
3. As for securities other than those in the trading portfolio, debt securities that the Tama Shinkin Bank (hereafter, "the Bank") has the intent and ability to hold to maturity (held-to-maturity securities) are carried at amortized cost (straight-line basis) using the moving-average method. Investments in subsidiaries are carried at cost using the moving-average method.
Securities excluding those classified as trading securities, held-to-maturity or investments in subsidiaries are defined as available-for-sale securities. Available-for-sale securities are valued at market value. The costs of such securities sold are computed using the moving-average method. Other non-marketable securities are carried at cost using the moving-average method.
Unrealized gains and losses on available-for-sale securities are reported, net of applicable income taxes as a component of net assets.
4. The valuation of the securities constituting the trust assets in a monetary trust is carried out in the same way as in 2 and 3 above.
5. Derivative transactions are evaluated using the market value method.
6. The depreciation of the Bank's tangible fixed assets (excluding leased assets) is computed by the declining balance method.

The estimated useful lives of major items are as follows:
Buildings 15 to 50 years
Others 3 to 20 years
7. The amortization of the Bank's intangible fixed assets except for leased assets is computed by the straight-line method. Capitalized software for internal use is amortized based on the Bank's estimate of useful life (mostly 5 years).
8. The bank translates assets and liabilities in foreign currencies into yen at the year-end exchange rate.
9. Reserve for possible loan losses of the Bank has been established based on the Bank's internal rules for establishing a reserve for possible loan losses, described as follows.
For claims on borrowers that have entered into bankruptcy, special liquidation proceedings or similar legal proceedings ("Bankrupt Borrowers"), or borrowers that are not legally or formally insolvent but are regarded as substantially in the same situation ("Effectively Bankrupt Borrowers"), an allowance is provided based on the amount of claims, after the write-off stated below, net of the expected amount of recoveries from collateral and guarantees.
For claims on borrowers that are not currently bankrupt, but likely to become bankrupt in the future ("Potentially Bankrupt Borrowers"), an allowance is provided in the amount deemed necessary based on an overall solvency assessment of the claims, net of the expected amount of recoveries from collateral and guarantees.
For other claims, an allowance is provided mainly by forecasting the expected amount of losses for the following year. The expected amount of losses is calculated by obtaining the loan-loss ratio based on the actual annual loan losses or bankruptcies or the loss ratio based on the average of the actual ratio of loan losses or actual

ratio of bankruptcies based on the actual annual loan losses or bankruptcies over a certain period in the past and making the necessary modifications for such matters as future prospects.
All claims will be given an asset assessment by the sales office, who are departments related to sales, based on the asset self-assessment standards, and the results of the assessment will be verified by the Loans Department. Furthermore, the Auditing Department, an asset Auditing Department separate from the aforementioned Loans Department, will inspect the results of the assessment.
For collateralized or guaranteed claims on Bankrupt Borrowers and Effectively Bankrupt Borrowers, the amount exceeding the estimated value of collateral and guarantees is deemed to be uncollectible and written off against the total outstanding amount of the claims. The cumulative write-off amount was ¥5,369 million (US\$35,914 thousand).

10. Reserve for employee bonuses is provided for the payments of bonuses to employees, by the amount of estimated bonuses, which are attributable to this fiscal year.
11. Reserve for employee retirement benefits is provided for the payments of employee retirement benefits based on estimated amounts of the actuarial retirement benefit obligation and the pension assets as of the fiscal year end. In the calculation of retirement benefit obligations, we use a benefit formula for the period attribution method for estimated amounts of retirement benefit obligations. The actuarial differences are reported as expenses as follows.

Actuarial Differences

Unrecognized net actuarial differences are amortized from the next fiscal year by the straight-line basis over the prescribed years within the average remaining service period (10 years) of active employees.

Furthermore, in order to prepare for the payment of retirement benefits to participants in the lump-sum retirement benefit plan, we recorded an amount necessary at the fiscal year end under a compendium method set forth in Implementation Guidance No. 25 on Accounting Standard for Retirement Benefits (March 26, 2015).

The Bank participates in the corporate pension plan (an integrated corporate-type employees' pension scheme) set up by multiple other businesses, such as Shinkin banks, and as it is not possible to reasonably compute an amount of pension assets corresponding to our contributions, we treat our contributions to the pension scheme as retirement benefit expenses.

The most recent data on the reserves of the corporate pension plan and the Bank's share in total contributions to the plan and supplementary explanations about them are as follows:

- a) Matters concerning the corporate pension plan's reserve (as of March 31, 2024)

	Millions of yen	Thousands of U.S. dollars
Amount of Pension Assets	¥ 1,832,300	\$ 12,254,551
Sum of Amount of Actuarial Pension Obligations Amount of the Minimum Actuarial Liability	1,853,684	12,397,571
Balance	¥ (21,384)	\$ (143,019)

- b) Share of the Bank's premium contributions to the plan (as of March 31, 2024) was 2.0554%
- c) Supplementary explanations
The main factor for the balance in a) above is the balance of ¥134,623 million (US\$900,372 thousand) in past service liabilities. As the pension plan uses the equal payment fixed-rate method for amortizing past service costs over a period of 19 years and 0 months, the Bank charged ¥392 million (US\$2,622 thousand) in special premiums in the financial statements for the fiscal year ended March 31, 2025.

As the amount of special premiums is computed by multiplying the amount of standard pay at the time of contributions by the predetermined premium rate, the percentage shown in b) above does not correspond to the actual ratio of contributions by the Bank.

12. Reserve for retirement benefits to directors, which is provided for payment of retirement benefits to directors and auditors, is recorded in the amount deemed accrued at the fiscal year end date based on the estimated amount of benefits.
13. Reserve for reimbursement of deposits, which were derecognized from liabilities, is based on the possible losses on the future claims of withdrawal to prepare for depositor's needs of withdrawal.
14. Reserve for contingencies is provided for future payments to Credit Guarantee Corporation based on the amount reasonably calculated.
15. Finance lease transactions without transfer of ownership entered into before April 1, 2008 have been accounted for in accordance with accounting methods used for operating leases.
16. For the hedge accounting method applied to hedging transactions for interest rate risk arising from financial assets, the deferred hedge accounting method is applied as prescribed by the Industry Audit Committee Report No. 24, "Treatment of Accounting and Auditing of Application of Accounting Standard for Financial Instruments in the Banking Industry" (the Japanese Institute of Certified Public Accountants Industry Audit Committee Report No. 24, March 17, 2022) (Hereafter "Industry Audit Committee Report No. 24"). With respect to the hedge effectiveness testing, the Bank assesses the effectiveness of such hedges by monitoring the offsetting fluctuation of fair value by changes in interest rates, of the hedged bonds and hedging instruments, such as interest rate swaps.
17. The Bank applies the deferral hedge method of accounting to hedges of foreign currency risks associated with foreign-currency-denominated monetary assets and liabilities in accordance with "Accounting and Auditing Treatments for Foreign Currency Transactions in the Banking Industry (the Japanese Institute of Certified Public Accountants Industry Audit Committee Report No.25, October 8, 2020). With respect to the hedge effectiveness testing, the Bank designates foreign exchange swap transactions as hedges against fluctuation in foreign currency exchange rates arising from foreign currency monetary claims and assesses the effectiveness of such hedges by verifying that the Bank holds foreign currency positions of the hedged items corresponding to the positions of the hedging instruments.

18. Fees and commissions received are revenues received in exchange for services rendered, and include "exchange commissions received," "other commissions received," and "other fees and commissions received." Exchange commissions received are the commissions received from the currency exchange business and include those based on the domestic exchange business such as remittances and collections, and those based on the foreign currency exchange business such as export and import commissions and foreign exchange remittance commissions.

Income from the performance of services related to foreign exchange services and other service transactions is, in principle, recognized at a single point in time, as these services are usually fulfilled at the same time as compensation is received. For fixed usage fees related to safe deposit boxes and money changers, contract liabilities are recorded as unearned income and prorated over the period of use, but there are no transactions for which the obligation to fulfill performance exceeds one year.

19. Non-deductible consumption taxes related to fixed assets are calculated under costs for this fiscal year.
20. The items whose amounts have been appropriated in the financial statements, etc., for the fiscal year by accounting estimates and have the possibility to have a material impact on the financial statements, etc., for the following fiscal year are the following. Reserve for possible loan losses was ¥5,833 million (US\$39,011 thousand)
The calculation method of the reserve for possible loan losses is recorded in 9. Significant Accounting Policies. The main assumption regarding the appropriation of the reserve for possible loan losses is "Future Business Outlook of Borrowers in Determining Debtor Categories," where the earning capacity of each debtor is evaluated individually and determined. As the result, in the case where there is a change in the assumption used for the initial estimate due to a change in the business results of an individual borrower, etc., there may be a material impact on the reserve for possible loan losses for the following fiscal year and beyond.
In addition to the above, the additional individual reserve for possible loan losses is appropriated for the specific debtors whose credit risk has increased.
21. Total monetary claims to directors and auditors as a result of transactions between directors and auditors were ¥112 million (US\$753 thousand)
22. Capitalization of subsidiaries was ¥2,119 million (US\$14,172 thousand)
23. Total monetary claims for subsidiaries were ¥1,277 million (US\$8,542 thousand)
24. Total monetary liabilities for subsidiaries were ¥5,034 million (US\$33,669 thousand)
25. Cumulative total depreciation of tangible fixed assets was ¥23,850 million (US\$159,515 thousand)
26. Reduction entry amount of tangible fixed assets was ¥289 million (US\$1,933 thousand)

27. In addition to fixed assets recorded on the balance sheet, communication and control devices are used according to non-ownership-transfer finance lease contracts.

1) Acquisition Cost Expenses

	Millions of yen	Thousands of U.S. dollars
Tangible Fixed Assets	¥ 284	\$ 1,904
Intangible Fixed Assets	0	1
Total	¥ 284	\$ 1,905

2) Accumulated Depreciation

	Millions of yen	Thousands of U.S. dollars
Tangible Fixed Assets	¥ 159	\$ 1,064
Intangible Fixed Assets	0	0
Total	¥ 159	\$ 1,065

3) Year-end Closing Balance

	Millions of yen	Thousands of U.S. dollars
Tangible Fixed Assets	¥ 125	\$ 840
Intangible Fixed Assets	0	0
Total	¥ 125	\$ 840

4) Future Lease Payments Year-end Closing Balance

	Millions of yen	Thousands of U.S. dollars
1 year or Less	¥ 63	\$ 425
Exceeding 1 Year	76	513
Total	¥ 140	\$ 938

5) Lease Payments, Depreciation Expense and Interest Expense Payments

	Millions of yen	Thousands of U.S. dollars
Lease Payments	¥ 88	\$ 589
Depreciation Expense	68	461
Interest Expense Payments	¥ 19	\$ 129

6) Depreciation Expense Calculation Method

Calculated using the straight-line method over the useful lives of the respective leased assets with zero residual value.

7) Calculation Method for Interest Payments

The difference between the total lease fee and acquisition equivalent amount is assumed the interest portion and distributed each year through the interest method.

28. Claims under the Shinkin Bank Act and the Act on Emergency Measures for Revitalization of Financial Functions are as follows.

Receivables are included in the following accounts in "securities" on the balance sheet: corporate bonds (limited to those for which the redemption of the principal and the payment of interest are guaranteed in whole or in part by private placement of securities [Article 2, Paragraph 3 of the Financial Instruments and Exchange Act]), loans, foreign exchange, accrued interest and temporary payments in "other assets," and items recorded in each account under "debt guarantees" and securities (limited to those lent under a loan-for-use or lease agreement) in the case of securities loaned as recorded in the notes.

	Millions of yen	Thousands of U.S. dollars
Bankrupt and Quasi-bankrupt Assets	¥ 7,937	\$ 53,089
Doubtful assets	57,688	385,822
Loans past due for three months or more	—	—
Restructured loans	—	—
Total	¥ 65,626	\$ 438,911

Bankrupt and quasi-bankrupt assets are loans to debtors who have fallen into bankruptcy due to initiation of bankruptcy proceedings, reorganization proceedings, petition for commencement of rehabilitation proceedings, etc., and other similar claims.

Doubtful assets are loans for which the debtor has not yet entered bankruptcy, and it is highly probable that the principal cannot be collected, and interest cannot be received in accordance with the contract because the financial condition and business performance

of the debtor have deteriorated, and which do not fall under claims in bankruptcy, reorganization or similar cases.

Loans past due for three months or more are loans whose principal and/or interest payments have been past due for three months or more, excluding loans to bankrupt and quasi-bankrupt borrowers and doubtful assets.

Restructured loans are loans renegotiated at concessionary terms, including reduction or deferral of interest or principal and waiver of the claims, due to the borrower's weakened financial condition, excluding bankrupt and quasi-bankrupt assets, doubtful assets and loans past due for three months or more.

These amounts are stated before the reduction of reserve for possible loan losses.

29. Bills discounted are treated as financial transactions in accordance with JICPA Industry Audit Committee Report No.24.

Bills accepted by other banks, commercial bills, bills of exchange, and foreign bills bought are permitted to be sold or pledged and the total face value was ¥3,098 million (US\$20,719 thousand).

30. Assets pledged as collateral are as follows.

Assets pledged as collateral:	Millions of yen	Thousands of U.S. dollars
Securities	¥ 2,382	\$ 15,930
Other Assets	13	89

Other liabilities that apply to pledged assets apply mainly to revenues and public funds. In addition to the above, due from banks totalling ¥165,000 million (US\$1,103,531 thousand), securities totalling ¥61,866 million (US\$413,765 thousand) were pledged as collateral for exchange settlements, exchange yen settlements, forward exchange contracts, foreign currency yen settlements and call transactions, or in lieu of futures trading margin money. Securities lent out for cash-secured bond lending transactions amounted to ¥69,092 million (US\$462,093 thousand), while cash collateral accepted for bond lending transactions amounted to ¥63,390 million (US\$423,958 thousand).

31. In accordance with the Act on Revaluation of Land, promulgated on No.34 March 31, 1998, the Bank's business use real estate was revalued. The corresponding taxes on land revaluation are reported as "Deferred Tax Liabilities for Land Revaluation" in the liabilities section of the non-consolidated balance sheets. The excess of the revaluation over the related deferred tax liabilities is recorded as "Land Revaluation Excess."

Date of the revaluation:	
The former Tama Chuo Shinkin Bank	March 31, 1999
The former Taihei Shinkin Bank	March 31, 1998
The former Hachioji Shinkin Bank	March 31, 1998

Methods of real estate revaluation stipulated in Act on Revaluation of Land, Article 3, Section 3

Namely, land revaluation was adjusted and calculated in accordance with valuation by road rating stipulated in Article 2, Section 4 of the Order for Enforcement of the Act on Revaluation of Land (Government Ordinance No. 119 March 31, 1998) and for the land of which road rating price is not determined were adjusted based on the appraised value for the property tax stipulated in Article 2, Section 3 of the Act. Value correction for road rating price is based on the standards of the Basic Notice on Property Valuation, including depth price correction. Fixed asset appraisal values are calculated by making reasonable adjustments for each asset by applying an appraisal multiplier.

The difference between the total fair value of the revalued business land as of March 31, 2025 as stipulated in Article 10 of the Land Revaluation Law, and the total book value after revaluation is △¥1,803 million (△US\$12,061 thousand).

32. Net assets per investment unit is ¥269.12 (US\$1.79)

33. Concerning the situation of financial instruments

1) Policy for dealing with financial instruments

The Bank is involved in finance business including deposits, loans and also marketplace investments.

For the purpose of hedging against fluctuation in interest rates, the Bank entirely and efficiently manages the variety of risks incurred by holding financial assets and liabilities (ALM). Derivative transactions are also implemented as necessary as part of this management.

2) Contents of financial instruments and their risk

The main financial assets of the Bank are loans to customers within our business district. Also, the Bank holds securities, mainly bonds, investment trusts as well as stocks, for held-to-maturity purposes, passive investment purposes as well as business promotion purposes.

The major risks implied in these financial instruments are issuers' credit risk, interest rate fluctuation risk and market risk. Foreign currency securities are exposed to the risk of exchange rate fluctuations, but the Bank tries to avoid this risk as much as possible using forward exchange contracts and currency options.

However, financial liabilities are mainly deposits received from customers, and are exposed to liquidity risk.

The Bank conducts interest rate swap transactions and forward exchange contracts as one aspect of ALM. Using these as hedging instruments, the interest rate fluctuation risk regarding the financial instruments that are hedged items is subject to hedge accounting at the Bank.

3) Risk management systems for financial instruments

A. Credit risk management

In accordance with loan screening rules/procedures for credit risk management policy as well as for managing credit risk, the Bank has established a framework for credit management structures of its loan portfolio.

This framework covers such issues as screening of individual loans, credit limits, management of credit information, assignment of guarantees and collateral and measures against nonperforming loans.

Credit management is carried out by each of the Bank's branches as well as the Bank's Loan Department.

Senior management regularly participates in deliberations and receives reports concerning credit management at meetings of ALM Committee and Board of Directors.

Additionally, the Compliance and Risk Management Department checks on the credit management situation.

The credit risk of securities issuers and the counterparty risk for derivative transactions are managed by the Treasury And Securities Department by regularly monitoring credit information and market price.

B. Market risk management

i. Interest rate risk management

The Bank uses ALM to manage interest rate risk.

Details of the risk management methods and procedures are clearly stipulated in the regulations and guidelines concerning ALM, and based on the risk management policies determined by ALM Committee, the Board of Directors monitors and confirms the implementation status and decides future

responses through discussion.

Financial assets as well as liabilities' interest rates and periods are comprehensively identified in the Compliance and Risk Management Department, and are subject to monitoring by gap analysis and interest rate sensitivity analysis.

Additionally, using ALM, the Bank conducts derivative transactions (interest rate swaps) to hedge against the risk of fluctuations in the interest rate.

ii. Exchange rate risk management

The Bank seeks to avoid exchange rate risk as much as possible using foreign currency forwards.

iii. Market price fluctuation risk management

Holdings of market investment instruments including securities are managed in accordance with the market risk management rules based on policies set by the ALM committee, under the supervision of the Board of Directors.

The Treasury And Securities Department conducts purchases of market investment instruments and tries to mitigate fluctuations risk through continuous monitoring in addition to pre-purchase screening and the setting of investment limits.

Most of the stocks held by the Treasury And Securities Department are held for passive investment purposes, and by inverse correlation with the bond's price, they are held with the purpose of reducing market price fluctuations risk for the securities overall.

The above-mentioned information is regularly reported to the ALM committee through the Treasury And Securities Department.

iv. Derivative transactions

The execution, assessment of hedging effectiveness and transaction administration are each handled by separate divisions to ensure proper internal control. Derivative transactions are conducted in accordance with specific rules on such transactions and guidelines for handling adoption of hedge accounting.

v. Quantitative information regarding market risk

The Bank calculates the market risk amount of items such as "due from banks," "securities," "loans," and "deposits" using VaR on a monthly basis, and ensures the acquired risk amount is within the range of its risk limits.

The Bank's VaR is calculated according to the historical simulation method (holding period: 6 month, confidence interval: 99%, observation period: 5 years), and as of March 31, 2025 (fiscal year end) the Bank's amount of market risk (estimated value of loss) was ¥28,649 million (US\$191,610 thousand) overall.

The Bank executes backtesting which compares calculated VaR and the actual profit/loss to verify the effectiveness of the VaR measurement model. However, the VaR statistically figures the risk based on historical market fluctuation and may be sometimes unable to completely grasp the risk in the environment that the market unexpectedly changes beyond the estimation.

C. Management of liquidity risk related to fund-raising

Through ALM, the Bank manages liquidity risk through such activities as managing its cash position in a timely manner through ALM, diversifying fundraising methods and adjusting the balance between short- and long-term fundraising in line with market conditions.

4) Supplementary explanation on fair values of financial instruments

Since the estimates of fair values of financial instruments are predicted on certain assumptions, values may vary if the underlying assumptions change.

34. Matters Relating to the Market Values of Financial Instruments

The following are the carrying amount on the balance sheets, the fair value as of March 31, 2025, and net unrealized gains (losses between these amounts (Note 1 in regards to the calculation method for fair value, etc.). Stocks and other securities without market prices and investments in partnerships are not included in the following table (see [Note 2]). Notes are omitted for cash, call loans, receivables under securities borrowing transactions, and foreign exchange (assets/liabilities), as their fair values approximate their book values due to the short maturity of these instruments.

	Millions of yen		
	Carrying Amount	Fair Value	Net unrealized gains (losses)
1) Due from Banks	¥ 1,069,421	¥ 1,059,560	¥ (9,861)
2) Monetary Claims Purchased	64,330	64,330	—
3) Securities			
Bonds Classified as Held-to-Maturity	206,507	187,822	(18,684)
Available-for-Sale Securities (*1)	917,226	917,226	—
4) Loans and Bills Discounted	1,196,725		
Reserve for Possible Loan Losses (*2)	(5,799)		
	1,190,926	1,195,357	4,431
Total Financial Assets	¥ 3,448,412	¥ 3,424,297	¥(24,114)
1) Deposits	3,274,207	3,273,660	546
2) Call Money	103,816	103,816	—
3) Bond Lending Transactions	63,390	63,390	—
Total Financial Liabilities	¥ 3,441,414	¥ 3,440,867	546
Derivative Transactions (*3)			
to which Hedge Accounting is not Applied	(0)	(0)	—
to which Hedge Accounting is Applied (*4)	(239)	(239)	—
Total Derivative Transactions	¥ (239)	¥ (239)	—

	Thousands of U.S. dollars		
	Carrying Amount	Fair Value	Net unrealized gains (losses)
1) Due from Banks	\$ 7,152,365	\$ 7,086,413	\$(65,951)
2) Monetary Claims Purchased	430,246	430,246	—
3) Securities			
Bonds Classified as Held-to-Maturity	1,381,134	1,256,169	(124,965)
Available-for-sale securities (*1)	6,134,474	6,134,474	—
4) Loans and Bills Discounted	8,003,782		
Reserve for Possible Loan Losses (*2)	(38,786)		
	7,964,995	7,994,634	29,638
Total Financial Assets	\$23,063,216	\$22,901,938	\$(161,278)
1) Deposits	21,898,122	21,894,466	3,655
2) Call Money	694,334	694,334	—
3) Bond Lending Transactions	423,958	423,958	—
Total Financial Liabilities	\$23,016,414	\$23,012,759	\$ 3,655
Derivative Transactions (*3)			
to which Hedge Accounting is not Applied	(0)	(0)	—
to which Hedge Accounting is Applied (*4)	(1,599)	(1,599)	—
Total Derivative Transactions	\$ (1,599)	\$ (1,599)	—

(*1). Other securities include investment trusts that apply standard values under Paragraphs 24-3 and 24-9 in ASBJ Guidance No. 31 "Implementation Guidance on Accounting Standard for Fair Value Measurement" (June 17, 2021) as the deemed fair value.

(*2). General and specific reserves for possible losses corresponding to cash collateral received for bond repurchase agreement were deducted.

(*3). Derivative transactions stated in other assets and liabilities are collectively stated. Net receivables or payables derived from derivatives are presented on a net basis. The item that is a net liability in total is presented in parentheses.

(*4). They are interest rate swaps and other means designated as hedging methods to offset the market fluctuation of securities, etc., that are being hedged, and mainly use deferred hedging. The "Treatment of Hedge Accounting concerning Financial Products that Use LIBOR as Reference" (Industry Audit Committee Report No. 40. March 17, 2022) is applied to these hedging matters.

(Note.1) Assessment (calculation method) of fair values of financial instruments.

In addition, immaterial items were omitted from the table.

Financial assets

1) Due from banks

For due from banks without maturity the carrying amount is presented at fair value because it approximates such fair value. The fair value of due from banks with maturity, classified by its remaining maturity, is estimated by discounting the estimated interest rate that would apply in the case of new similar transactions, or the market interest rate (overnight indexed swap (OIS) rate) on the base date of fair value estimation. For due from banks with maturity that include derivative transactions, the fair value is the amount reasonably calculated by accepting financial institution.

2) Monetary claims purchased

Monetary claims purchased depend on the pricing from the corresponding bank. For those monetary claims purchased without a market price, the current price is the amount after deducting the credit risk amount from the book value.

3) Investment securities

The fair values of equities are determined using their quoted market prices on the stock exchange, while the fair values of bonds are based on quoted market prices or quotes obtained from financial institutions. Investment trusts funds are valued at closing quotations at the exchange, or quotes obtained from the financial institutions.

Notes to securities classified by purpose for which they are held are listed in 35 through 37.

4) Loans

Loans with floating interest rates reflect short-term market interest rates, so unless there is a significant change in the creditworthiness of the borrower after receiving the loan, the market value will be similar to the book value. Therefore the book value is recorded as the market value. The current prices for borrowing with fixed interest rates is calculated by multiplying future cash flow by the discount rate calculated as follows.

The discount rate is calculated from the market interest rate (OIS) on the base date for calculating market value, taking into consideration the credit spread based on the creditworthiness of the borrower (internal rating/type of borrower), collateral, and guarantees.

For bills discounted, loans on bills, and overdrafts with short transaction periods, their carrying amount is presented as the fair value since the fair value approximates such carrying amount.

Losses on claims against borrowers who are bankrupt, virtually bankrupt or potentially bankrupt are estimated based on the forecasted recoverable amounts of collateral and guarantees for such claims. The fair values of such claims approximate their carrying amounts as of the closing date after deduction of present estimated loan losses. Therefore, the Bank adopts the book values of such claims as fair values.

Financial liabilities

1) Deposits

For on-demand deposits, the amount payable on demand as of the balance sheet date is considered to be the fair value.

The fair value of time deposits is estimated by discounting expected future cash flows using the discount rates that would be applied to newly accepted deposits. For short-term time deposits whose first transaction period is short term, their carrying amounts are presented at fair value as fair values thereof approximate the carrying amounts.

2) Call Money, 3) Bond Lending Transactions

Because of their short term nature (less than 6 months), and since the fair value is approximately the same as the book value, they are stated at that book value.

Derivative transactions

The Bank uses derivative transactions such as interest rate swaps and forward exchange contracts. An amount reasonably calculated by the derivative counterparties is used as the fair value for interest rate swap transactions, and a price calculated by the market prices and prescribed discount rate is used as the fair value for forward exchange contracts.

(Note.2) The balance sheet for stocks and other securities without market prices and investments in partnerships is as follows, and these instruments are not included in information on the fair value of financial instruments.

	Millions of yen	Thousands of U.S. dollars
	Carrying Amount	
Subsidiaries' Stocks (*1)	¥ 2,119	\$ 14,172
Unlisted Stocks(*2)(*3)	374	2,506
Investments in Shinkin Central Bank (*4)	14,635	97,885
Investments in Partnerships (*5)	2,173	14,534
Total	¥ 19,302	\$ 129,099

(*1). In accordance with Paragraph 5 of "Implementation Guidance on Disclosures about Fair Value of Financial Instruments" (March 31, 2020) of ASBJ Guidance No. 19, subsidiaries' stocks are not subject to disclosure of fair value.

(*2). In accordance with Paragraph 5 of "Implementation Guidance on Disclosures about Fair Value of Financial Instruments" (March 31, 2020) of ASBJ Guidance No. 19, unlisted stocks are not subject to disclosure of fair value.

(*3). For this fiscal year, impairment loss on unlisted stocks was not recognized.

(*4). In accordance with Paragraph 5 of "Implementation Guidance on Disclosures about Fair Value of Financial Instruments" (March 31, 2020) of ASBJ Guidance No. 19, investments in Shinkin Central Bank are not subject to disclosure of fair value.

(*5). In accordance with Paragraph 24-16 of the "Implementation Guidance on Accounting Standard for Fair Value Measurement" (June 17, 2021), ASBJ Guidance No. 31, investments in partnerships are not subject to disclosure of fair value.

(Note.3) Scheduled redemption amount of due from banks and securities with a maturity date after March 31, 2025

	Millions of yen			
	1 year or less	1 to 3 years	3 to 5 years	Over 5 years
Due from Banks	¥ 505,921	¥ 313,000	¥ 213,500	¥ 37,000
Monetary Claims Purchased	—	61	18	72,898
Securities	112,528	298,354	203,637	390,886
Bonds Classified as Held-to-Maturity	1,076	6,500	6,630	192,242
Available-for-sale securities with Maturity Dates	111,452	291,854	197,007	198,644
Loans and Bills Discounted	262,634	226,702	173,532	533,855
Total	¥ 881,084	¥ 838,118	¥ 590,688	¥1,034,640

	Thousands of U.S. dollars			
	1 year or less	1 to 3 years	3 to 5 years	Over 5 years
Due from Banks	\$ 3,383,638	\$ 2,093,365	\$ 1,427,902	\$ 247,458
Monetary Claims Purchased	—	411	122	487,550
Securities	752,597	1,995,412	1,361,943	2,614,277
Bonds Classified as Held-to-Maturity	7,196	43,472	44,341	1,285,729
Available-for-sale securities with Maturity Dates	745,401	1,951,940	1,317,601	1,328,548
Loans and Bills Discounted	1,756,519	1,516,204	1,160,596	3,570,461
Total	\$ 5,892,755	\$ 5,605,393	\$ 3,950,565	\$ 6,919,748

(Note.4) Scheduled redemption amount of interest-bearing debt after March 31, 2025

	Millions of yen			
	1 year or less	1 to 3 years	3 to 5 years	Over 5 years
Deposits(*)	¥ 3,185,959	¥ 68,520	¥ 17,083	¥ 2,643
Call Money	103,816	—	—	—
Bond Lending Transactions	63,390	—	—	—
Total	¥ 3,353,166	¥ 68,520	¥ 17,083	¥ 2,643

	Thousands of U.S. dollars			
	1 year or less	1 to 3 years	3 to 5 years	Over 5 years
Deposits(*)	\$ 21,307,914	\$ 458,269	\$ 114,256	\$ 17,681
Call Money	694,334	—	—	—
Bond Lending Transactions	423,958	—	—	—
Total	\$ 22,426,207	\$ 458,269	\$ 114,256	\$ 17,681

(*) Demand-on deposits contained within deposit reserves are stated as "1 year or less."

35. Matters related to the fair value and Gross unrealized gains (losses) of securities are as follows. Included in these are "National Government Bonds," "Local Government Bonds," "Corporate Bonds," "Stocks," "Available-for-sale securities," and also "trading account securities." The material up to 37. below is treated in the same manner.

Securities Classified as Trading

	Gains (Losses) include in profit/loss for the Current Fiscal Year	
	Thousands of yen	U.S. dollars
Securities Classified as Trading	¥ (1,805)	\$(12,071)

Held-to-maturity bonds

	Millions of yen		
	Carrying Amount	Market Value	Gross unrealized gains (losses)
Unrealized gain			
National Government Bonds	¥ —	¥ —	¥ —
Local Government Bonds	76	76	0
Corporate Bonds	3,042	3,064	21
Other	—	—	—
Subtotal	3,118	3,140	22
Unrealized loss			
National Government Bonds	488	470	(18)
Local Government Bonds	133,266	119,489	(13,777)
Corporate Bonds	55,892	51,493	(4,399)
Other	13,741	13,229	(512)
Subtotal	203,388	184,681	(18,707)
Total	¥ 206,507	¥ 187,822	¥ (18,684)

	Thousands of U.S. dollars		
	Carrying Amount	Market Value	Gross unrealized gains (losses)
Unrealized gain			
National Government Bonds	\$ —	\$ —	\$ —
Local Government Bonds	509	511	1
Corporate Bonds	20,345	20,492	146
Other	—	—	—
Subtotal	20,855	21,003	148
Unrealized loss			
National Government Bonds	3,266	3,143	(122)
Local Government Bonds	891,298	799,153	(92,144)
Corporate Bonds	373,810	344,389	(29,421)
Other	91,904	88,479	(3,425)
Subtotal	1,360,279	1,235,165	(125,113)
Total	\$ 1,381,134	\$ 1,256,169	\$ (124,965)

Note. Market value is based on the market price at the end of the fiscal year.

Available-for-sale securities

		Millions of yen		
Type		Carrying Amount	Acquisition Cost	Gross unrealized gains (losses)
Unrealized gain	Stocks	¥ 24,480	¥ 13,017	¥ 11,463
	Bonds	40,273	40,118	154
	National Government Bonds	6,519	6,506	13
	Local Government Bonds	15,131	15,096	34
	Corporate Bonds	18,622	18,515	106
	Other	198,112	190,180	7,931
Subtotal		262,865	243,316	19,549
Unrealized loss	Stocks	2,027	2,188	(161)
	Bonds	414,461	429,835	(15,373)
	National Government Bonds	64,125	65,888	(1,762)
	Local Government Bonds	52,801	58,671	(5,869)
	Corporate Bonds	297,534	305,275	(7,741)
	Other	303,194	323,084	(19,890)
Subtotal		719,683	755,108	(35,425)
Total		¥ 982,549	¥ 998,425	¥ (15,876)

		Thousands of U.S. dollars		
Type		Carrying Amount	Acquisition Cost	Gross unrealized gains (losses)
Unrealized gain	Stocks	\$ 163,725	\$ 87,059	\$ 76,666
	Bonds	269,348	268,315	1,033
	National Government Bonds	43,604	43,516	87
	Local Government Bonds	101,197	100,965	231
	Corporate Bonds	124,547	123,833	713
	Other	1,324,991	1,271,942	53,048
Subtotal		1,758,065	1,627,317	130,748
Unrealized loss	Stocks	13,558	14,637	(1,079)
	Bonds	2,771,948	2,874,770	(102,821)
	National Government Bonds	428,875	440,663	(11,787)
	Local Government Bonds	353,141	392,400	(39,258)
	Corporate Bonds	1,989,931	2,041,706	(51,774)
	Other	2,027,783	2,160,811	(133,027)
Subtotal		4,813,291	5,050,219	(236,928)
Total		\$ 6,571,356	\$ 6,677,536	\$ (106,179)

Notes:1. Carrying amount is calculated by using market prices at fiscal year-end.
2. The ¥11,330 million (US\$△75,780 thousand) is calculated by deducting the deferred tax assets amount of ¥4,545 million (US\$30,399 thousand) and is included in "Unrealized gains on available-for-sale securities."

36. There are no held-to-maturity bonds sold during the fiscal year.

37. Available-for-sale securities sold during the fiscal year under review

		Millions of yen		
		Proceeds from sales	Gain on Sales	Loss on Sales
Equity securities		¥ 3,788	¥ 1,325	¥ 367
Bonds		32,307	437	698
National Government Bonds		23,588	434	287
Local Government Bonds		552	—	152
Corporate Bonds		8,165	3	257
Other		3,195	570	44
Total		¥ 39,291	¥ 2,333	¥ 1,109

		Thousands of U.S. dollars		
		Proceeds from sales	Gain on Sales	Loss on Sales
Equity securities		\$ 25,338	\$ 8,865	\$ 2,458
Bonds		216,072	2,924	4,668
National Government Bonds		157,761	2,903	1,921
Local Government Bonds		3,697	—	1,021
Corporate Bonds		54,614	21	1,724
Other		21,370	3,818	294
Total		\$ 262,782	\$ 15,609	\$ 7,421

38. Assets held in trust for investment

		Millions of yen	
		Carrying Amount	Gains/Losses for the Fiscal Year Under Review
Assets Held in Trust for Investment		¥ 12,432	¥ 106

		Thousands of U.S. dollars	
		Carrying Amount	Gains/Losses for the Fiscal Year Under Review
Assets Held in Trust for Investment		\$ 83,151	\$ 714

39. Other monetary trusts

(except those with management purpose and those to be held to maturity)

		Millions of yen				
		Carrying Amount	Acquisition Cost	Gross unrealized gains (losses)	Unrealized gain	Unrealized loss
Other monetary trusts		¥ 1,010	¥ 1,000	¥ 10	¥ 10	—

		Thousands of U.S. dollars				
		Carrying Amount	Acquisition Cost	Gross unrealized gains (losses)	Unrealized gain	Unrealized loss
Other monetary trusts		\$ 6,758	\$ 6,688	\$ 70	\$ 70	—

40. Matters regarding real estate for lease

The Bank leases a part of its land/buildings owned in Tachikawa City and other locations. The disclosure of this market value is omitted due to the immateriality of the total amount of the investment and rental property.

41. Securities lent under unsecured securities lending agreements (bond borrowing and lending transactions) are included in "National Government Bonds" for a total of ¥69,341 million (US\$463,762 thousand).

42. Overdraft facilities contracts and loan commitment limits are contracts under which the Bank lends to customers up to prescribed limits. Under these contracts, funds can be drawn based on customers' application for a loan as long as there is no violation of any condition in the contracts. The unused amount within the limits relating to these contracts was ¥94,022 million (US\$628,826 thousand). Of these contracts, those where the remaining period on the contract is 1 year or less amount to ¥79,180 million (US\$529,563 thousand).

Since many of these commitments expire without being drawn upon, the unused amount does not necessarily represent a future cash requirement. Most of these contracts have conditions that allow the Bank to refuse the customers' application for loans or to decrease the contract limits for proper reasons such as changes in financial situation, deterioration in customers' creditworthiness, or other reasonable grounds. Not only does the Bank obtain real estate, securities and/or other collateral if considered to be necessary at the inception of contracts, the Bank performs periodic reviews of the customer's business results based on internal rules, and takes necessary measures to reconsider conditions in contracts and/or require additional collateral and guarantees.

43. Details of deferred tax assets and liabilities as of March 31, 2025 are as follows.

	Millions of yen	Thousands of U.S. dollars
Proceeds from sales		
Deferred Tax Assets		
Reserve for Possible Loan Losses	¥ 2,024	\$ 13,541
Depreciation	609	4,074
Reserve for Bonuses	421	2,818
Reserve for Director's Retirement Benefits	129	868
Reserve for Employee Retirement Benefits	5	38
Unrealized Gains on Available-for-Sale Securities	4,545	30,399
Deferred Gains or Losses on Hedges	95	640
Other	1,446	9,674
Gross Deferred Tax Assets	9,278	62,056
Less: Valuation Allowance	(1,547)	(10,347)
Total Deferred Tax Assets	¥ 7,731	\$ 51,709
Deferred Tax Liabilities		
Asset retirement obligation	95	637
Prepaid pension costs	44	296
Total Deferred Tax Liabilities	139	933
Net Deferred Tax Liabilities	¥ 7,591	\$ 50,775

(Additional information)

Adjustments in Deferred Tax Assets and Liabilities due to Changes in Corporate Tax Rates Under the "Act on Partial Revision of the Income Tax Act and the Consumption Tax Act" (Act No. 13 of 2025) that was established on March 31, 2025, "Special Corporation Tax for National Defence" will be charged from the fiscal year beginning April 1, 2026. Accordingly, the statutory effective tax rate used to calculate deferred tax assets and liabilities will change from the existing 27.92% to 28.63% for temporary differences, etc., that are expected to be resolved during or after the fiscal year beginning April 1, 2026.

This tax rate change means that deferred tax assets for the fiscal year will increase by ¥152 million (US\$1,018 thousand), unrealized gains on other securities will decrease by ¥112 million (US\$753 thousand), deferred gains or losses on hedges will decrease by ¥2 million (US\$15 thousand), and corporate tax adjustment will decrease by ¥37 million (US\$248 thousand). The reevaluated deferred tax liabilities increased by ¥76 million (US\$510 thousand), and the land revaluation difference decreased by the same amount.

44. Additional information

In accordance with the provisions of Article 15, paragraph 1, item 1 in the law regarding cooperative financial institution's preferred shares (No.44; enacted on May 12, 1993), we cancelled the entire amount of preferred shares, and, after this cancellation, transferred the amount of ¥5,350 million (US\$35,781 thousand) of preferred shares to other shares in this current fiscal year.

Non-Consolidated Statements of Income and Retained Earnings

Non-Consolidated Statements of Income and Retained Earnings

	Thousands of yen		Thousands of U.S. dollars
	2025	2024	2025
OPERATING REVENUE	¥ 50,764,498	¥ 50,473,623	\$ 339,516
Interest Income	42,722,940	41,765,309	285,733
Loans	19,512,192	19,053,905	130,498
Deposits in Other Banks	3,185,591	1,492,235	21,305
Investment Securities	18,133,127	19,236,604	121,275
Interest Rate Swaps	1,166,250	1,233,939	7,799
Others	725,778	748,624	4,854
Fees and Commissions Received	4,914,140	4,610,667	32,866
Exchange Commissions Received	1,880,042	1,810,814	12,573
Others	3,034,097	2,799,852	20,292
Other Operating Income	1,247,231	624,778	8,341
Gains on Trading of Commodity Securities	—	534	—
Net Gain on Sales of Bonds such as National Government Bonds	1,008,270	258,877	6,743
Net Gain on Redemption of Bonds such as National Government Bonds	66,393	30,131	444
Derivative Financial Instrument Income	2,250	4,474	15
Others	170,316	330,760	1,139
Other Income	1,880,186	3,472,867	12,574
Gain on Bad Debts Recovered	91,881	183,419	614
Gains on Sales of Stocks	1,513,694	2,868,035	10,123
Gains on Money Held in Trust	221,930	145,180	1,484
Others	52,680	276,231	352
OPERATING EXPENSE	¥ 47,178,216	¥ 46,782,583	\$ 315,531
Interest Expense	5,288,103	4,156,187	35,367
Deposits	2,059,623	51,691	13,774
Provisions for Future Interest Payment of Installment Savings	7,188	194	48
Interest on Borrowings	160	152	1
Interest on Call Money	176,582	178,898	1,180
Interest Payment on Bond Lease Transactions	3,035,926	3,917,859	20,304
Others	8,622	7,391	57
Fees and Commissions Paid	1,795,043	1,613,812	12,005
Exchange Commissions Paid	494,437	461,809	3,306
Others	1,300,605	1,152,003	8,698
Other Operating Expenses	11,763,689	13,059,618	78,676
Net Loss on Foreign Exchange Trading	9,759,643	11,190,333	65,273
Net Loss on Trading Account Securities	2,340	—	15
Net Loss on Sales of Bonds such as National Government Bonds	742,082	1,303,609	4,963
Bond Redemption Loss such as on National Government Bonds	1,226,795	526,851	8,204
Others	32,827	38,823	219

	Thousands of yen		Thousands of U.S. dollars
	2025	2024	2025
General and Administrative Expenses	26,715,179	¥ 26,421,075	\$ 178,672
Salaries and Employee Benefits	15,600,209	15,215,578	104,335
Other General and Administrative Expenses	10,164,395	10,206,996	67,980
Tax	950,575	998,500	6,357
Other Expense	1,616,200	1,531,890	10,809
Provisions of Reserve for Possible Loan Losses	607,711	480,020	4,064
Write - off of Loans	20,760	10,374	138
Loss on Sale of Stocks	478,912	340,888	3,202
Loss on Money Held in Trust	65,248	154,234	436
Others	443,567	546,372	2,966
OPERATING INCOME	¥ 3,586,282	¥ 3,691,039	\$ 23,985
EXTRAORDINARY INCOME	835	261,920	5
Gain on Disposition of Fixed Assets	835	257,690	5
Other Extraordinary Income	—	4,230	—
EXTRAORDINARY LOSS	24,757	110,398	165
Loss on Disposal of Fixed Assets	24,757	110,398	165
INCOME BEFORE INCOME TAXES	¥ 3,562,361	¥ 3,842,561	\$23,825
INCOME TAXES CURRENT	714,369	953,216	4,777
INCOME TAXES DEFERRED	166,921	160,169	1,116
TOTAL INCOME TAXES	881,291	1,113,386	5,894
NET INCOME	¥ 2,681,069	¥ 2,729,175	\$17,931
RETAINED EARNINGS AT BEGINNING OF YEAR	1,674,295	1,347,799	11,197
RETAINED EARNINGS AT END OF YEAR	¥ 4,355,365	¥ 4,076,974	\$29,128

Notes: 1. Fractions of amounts stated which are smaller than a thousand yen omitted.
2. Total earnings by transactions with subsidiaries ¥ 94,547 thousand (US\$ 632,343)
Total expenses by transactions with subsidiaries ¥ 1,655,294 thousand (US\$ 11,070,726)
3. Net Income per share ¥ 6.48 (US\$ 0.043)
4. Underlying information for understanding profits is presented in the notes of the balance sheet together with major accounting policies.

Subsequent Event

The following appropriation of retained earnings applicable to the year ended March 31, 2025, was approved at the members' meeting held on June 24, 2025.

	yen	Thousands of U.S. dollars
Unappropriated Retained Earnings for the Current Term	¥ 4,355,365,511	\$ 29,128
Retained Earnings Carried Forward (Beginning Balance)	1,674,295,799	11,197
Current Net Income	2,681,069,712	17,931
Amount of Retained Earnings Appropriated	2,182,071,712	14,593
Legal Reserve	270,000,000	1,805
Dividends for Common Share (Yearly 3.0%)	412,071,712	2,755
Specific Reserve	1,500,000,000	10,032
Retained Earnings Carried Forward (Term-end Balance)	¥ 2,173,293,799	\$ 14,535

Independent Auditor and Independent Auditor's Report

In accordance with the provisions of Article 38-2-3 of the Shinkin Bank Act, Grant Thornton Taiyo LLC has audited Tama Shinkin Bank's Balance Sheet, Statements of Income, and Statements of Appropriation of Profit for the fiscal year ended March 31, 2025 and 2024.

Five-Year Summary

Five-Year Summary (Non-Consolidated Basis)(Unaudited)

The Tama Shinkin Bank

Years ended March 31, 2025, 2024, 2023, 2022 and 2021

	Millions of yen					Thousands of U.S. dollars
	2025	2024	2023	2022	2021	2025
For the Years Ended March 31						
Total Income	¥ 50,765	¥ 50,735	¥ 50,027	¥ 39,651	¥ 42,384	\$ 339,522
Interest on Loans and Bills Discounted	22,697	20,546	20,318	21,006	20,922	151,804
Interest and Dividends on Securities	18,133	19,236	16,472	12,076	12,092	121,275
Total Expenses	47,202	46,892	46,736	34,804	36,894	315,696
Business Profit	3,454	1,879	(1,816)	6,570	6,221	23,103
Income Before Income Taxes	3,562	3,842	3,291	4,846	5,489	23,825
Net Income	2,681	2,729	2,229	3,713	4,453	17,931
As of March 31						
Total Assets	¥ 3,568,998	¥ 3,569,762	¥ 3,484,190	¥ 3,515,199	¥ 3,441,607	\$ 23,869,704
Securities	1,128,401	1,129,949	972,356	1,054,088	1,175,118	7,546,823
Loans and Bills Discounted	1,196,725	1,154,871	1,164,851	1,155,192	1,194,545	8,003,782
Total Liabilities	3,457,769	3,451,504	3,373,545	3,388,850	3,306,415	23,125,802
Deposits	3,274,207	3,272,374	3,219,666	3,168,626	3,100,736	21,898,122
Total Net Assets	111,228	118,258	110,644	126,348	135,192	743,902
Number of Branches	81	81	81	81	81	
Number of Employees and Officers	1,722	1,778	1,868	1,924	1,959	
Deposits						
Per Branch	¥ 40,422	¥ 40,399	¥ 39,748	¥ 39,118	¥ 38,280	\$ 270,347
Per Employee and Officer	1,901	1,840	1,723	1,646	1,582	12,716
Loans and Bills Discounted						
Per Branch	14,774	14,257	14,380	14,261	14,747	98,812
Per Employee and Officer	694	649	623	600	609	4,647

Note: U.S. dollar amounts are converted, solely for convenience, at the prevailing rate on March 31, 2025 of ¥149.52=US\$1.

Supplemental Consolidated Financial Information

Supplemental Consolidated Financial Information (Unaudited)

The Tama Shinkin Bank and Subsidiaries

Years ended March 31, 2025 and 2024

	Millions of yen		Thousands of U.S. dollars
	2025	2024	2025
For the Fiscal Year:			
Total Income	¥ 56,021	¥ 55,731	\$ 374,684
Total Expenses	52,053	51,369	348,134
Income Before Income Taxes and Others	3,969	4,362	26,549
Net Income	2,951	3,081	19,742
Profit attributable to owners of parent	2,922	3,040	19,543
At Year-End:			
Deposits	¥ 3,269,172	¥ 3,267,724	\$ 21,864,452
Loans and Bills Discounted	1,195,586	1,154,251	7,996,167
Securities	1,127,301	1,129,046	7,539,472
Total Assets	3,580,100	3,581,170	23,943,960
Total Net Assets	119,180	126,091	797,087
Per Share Data (par value ¥50):			
Net Assets	¥ 289.17	¥ 303.77	\$ 1.933
Net Income	7.07	7.31	0.047

Notes: 1.The Bank consolidated three subsidiaries for the years ended March 31, 2025 and 2024.

2.U.S. dollar amounts are converted, solely for convenience, at the prevailing rate on March 31, 2025 of ¥149.52=US\$1.

Board of Directors
and Auditors
As of June 30, 2025

Chairman
Toshiro Yagi

President
Masahiko Kanai

Senior Managing Director
Hiroyuki Saito
Hideyuki Maekawa

Managing Directors
Nobutoshi Tsuji
Nobuaki Sakai
Hiroyuki Shibuya

Directors
Daijiro Ikeda
Tetsuo Yone
Yukiko Kawaguchi
Yoshihiro Takano
Takashi Murakami

Standing Auditor
Satoru Tanaka

Directory

Head Office
3-4, Midoricho,
Tachikawa, Tokyo 190-8681, Japan
Phone: 042-526-1111

Overseas Business Support Department
3-4, Midoricho,
Tachikawa, Tokyo 190-8681, Japan
Phone: 042-523-9190
Fax: 042-526-1139

International Operations Center
3-4, Midoricho,
Tachikawa, Tokyo 190-8681, Japan
Phone: 042-526-7703
Fax: 042-526-1139
SWIFT.BIC: TAMAJPT



The Tama Shinkin Bank

3-4, Midoricho, Tachikawa, Tokyo
190-8681, Japan